



# VET-OR1200 HD

VETERINARY ENDOSCOPE CATALOGUE



# VET-OR1200 HD

## VETERINARY ENDOSCOPE CATALOGUE



### VET-OR1200HD Imaging Processor

Video Signal Outputs	Y/C, DVI, AV
Image Enhancement	profile enhance, 0-3 steps
Brightness Adjustment	± 50 steps
IRIS	Average, Peak
Observation	Electronic emphasis on mucosal morphology or outline to enhance the sharpness of the endoscopic image. Press the switch W.B to achieve the white balance adjustment. HD images / video can be saved.
Freeze/Back	HD images can be frozen, saved and reviewed.
Power	Voltage ~110V/220V AC (± 10%) Frequency 50Hz/60Hz Air flow ≥5L/min Air pressure 30-80kPa
Air pump	Bulb LED
Lighting	Colour temperature ≥ 5500K

### HD New Display

Before

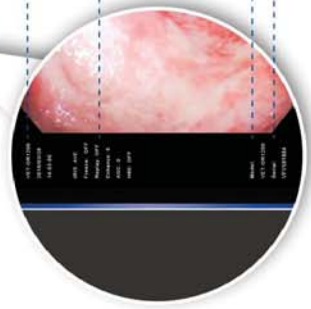


17' Round interface

After



19' Square interface



Model Number  
Endoscope Model Number  
Endoscope SN  
Function



**HD image**  
Megapixel Display, HD display, true representation

### Comparison - SD VS HD

High-definition image display, more details, clearly looking into any subtle changes before the eyes



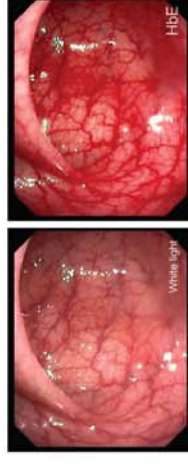
### Clinical- CCD VS CMOS

With high resolution image sensor, and introducing digital image processing technology, it can protect the endoscopic color and present the most high-quality images.



### (HbE) Hemoglobin Enhancement

The powerful upgraded HbE function can better highlight the hemoglobin in the blood and has obvious invigorating effect on the possible blood-flow direction in the diseased tissue.



### USB Function

The USB interface can be used to store video and still images using U disk.



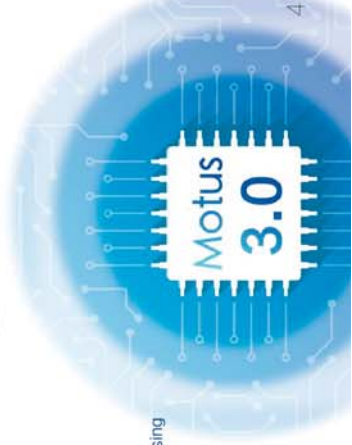
### Brand-new Motus 3.0 image processing platform

High data processing capacity

Full digital image processing

High modularization

A variety of interfaces



# Veterinary Endoscopes

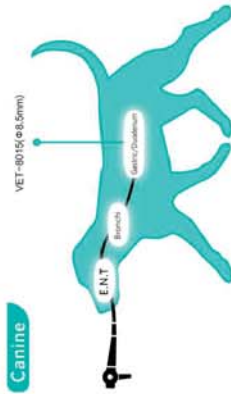
## Companion Animal Video Endoscopes

With the extended length and sleek design, Aohua multipurpose veterinary endoscopes are ideal for numerous companion animal applications. Upper and lower gastrointestinal endoscopy is perhaps the most widely indicated application of endoscopy in companion animals. A partial list of indications includes regurgitation, dysphagia, salivation, nausea, vomiting, hematemesis, melena, anorexia, diarrhea, weight loss, hematochezia, fecal mucus and tenesmus.

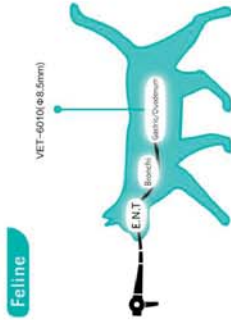
### VET-8015

Working length	1500 mm
Diameter of distal-end	8.5 mm
Diameter of instrument channel	2.0 mm
Range of bending	U210° D90° R/L100°

### Canine



### Feline



### VET-6010

Working length	1000 mm
Diameter of distal-end	5.8 mm
Diameter of instrument channel	2.0 mm
Range of bending	U180° D160°



## Large Animal Video Endoscopes

With the extended length and sleek design, Aohua multipurpose veterinary endoscopes are ideal for numerous large animal applications, including: Gastroscopy, Esophagoscopy, Tracheoscopy, Rhinoscopy, Pharyngoscopy and Laryngoscopy. Large working channel facilitates bigger biopsies to ensure a more accurate diagnosis. Uniform image brightness, even under difficult lighting conditions

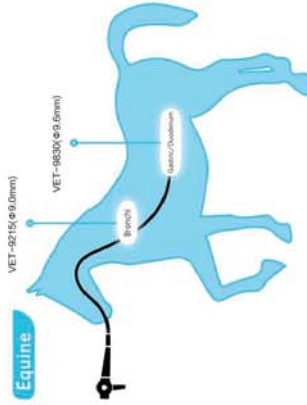
### VET-9215

Working length	1500 mm
Diameter of distal-end	9.0 mm
Diameter of instrument channel	2.8 mm
Range of bending	U210° D90° R/L100°

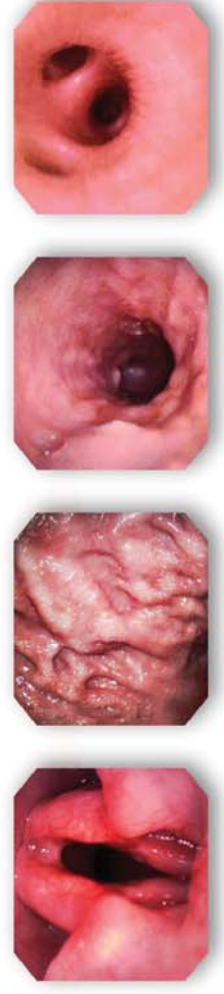
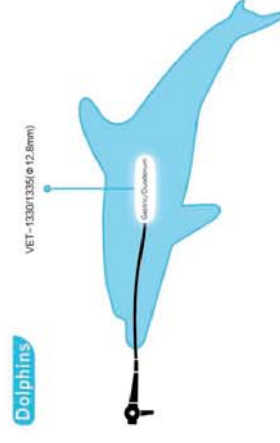
### VET-9830

Working length	3000 mm
Diameter of distal-end	9.6 mm
Diameter of instrument channel	2.8 mm
Range of bending	U210° D90° R/L100°

### Equine



### Dolphins



# All-in-one Portable Video Endoscope

- ① CMOS High Technology
- ② Bending 2 Section  
UP 210°  
Down 90°  
Left 100° Right 100°
- ③ Instrument Channel  
2.6mm
- ④ Detachable Suction Valve
- ⑤ 16GB SD Card
- ⑥ External LED Light Source  
Advantages: Greatly Reduce the temperature of distal end and reduce the risk of tissue charring, improve the safety standard of clinical application.
- ⑦ High-Definition Screens
- ⑧ High Quality Video Connector

## Portable Video Endoscope

MVE series (MVE-5010/6010 MVE-9215)

The MVE 5010/6010 & MVE-9215 are the self-contained ambulatory endoscopy systems. With integral screen, battery and recording capabilities, the Aohua MVE-5010/6010 & MVE-9215 are extremely cost-effective.

The complete ambulatory system has a broad range of applications including ear, nose, throat, urinary tract and bladder amongst others. The ambulatory video bronchoscope is the perfect solution for in surgery or ambulatory diagnosis.

### MVE-5010

Working length	1000 mm
Diameter of distal-end	5.2 mm
Diameter of instrument channel	2.2 mm
Range of bending	U140° D130°

### MVE-6010

Working length	1000 mm
Diameter of distal-end	5.8 mm
Diameter of instrument channel	2.6 mm
Range of bending	U140° D130°

### MVE-9215

Working length	1500 mm
Diameter of distal-end	9.0 mm
Diameter of instrument channel	2.8 mm
Range of bending	U210° D90° RL100°



## Portable Fiber Endoscope

Portable design provides the most convenient and quick endoscopy. Equipped with portable LED light source, which can provide bright and high-quality lighting under any circumstances.

Waterproof design for the insertion tube, convenient for cleaning and disinfection.

### BBF-5

Working length	600 mm
Diameter of distal-end	4.8 mm
Diameter of instrument channel	2.2 mm
Range of bending	U160° D130°



## Veterinary Endoscopic Accessories and Stent

### Biopsy

- 1.Disposable Biopsy Forceps
- 2.Disposable Cytology Brush

### Polypectomy

- 1.Disposable Snare
- 2.Disposable Hot Biopsy Forceps

### Foreign Body Removal

- 1.Disposable Grasping Forceps

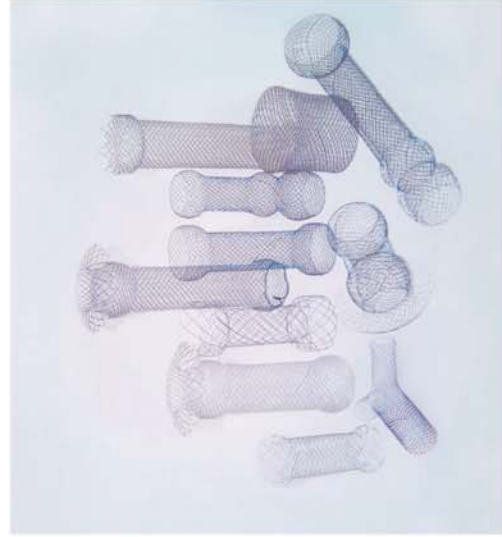
### Cleaning

- 1.Disposable Cleaning Brush



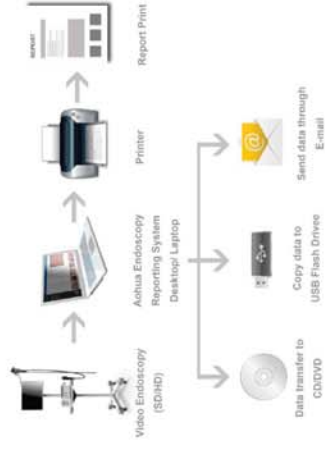
### Stent

- 1.Esophageal Stent
- 2.Tracheal and Bronchial Stent
- 3.Intestinal Canal Stent
- 4.Individual Stent



## Reporting System Software

- Video and picture recording;
- Patient Reporting multiple outlets and multi languages;
- DICOM compatible;
- Friendly installation and operation.



## Medical Monitor & Mobile Trolley

### Reporting System Software

- 19 inch medical grade monitor
- Can restore medical image truly and accurately.
- High brightness, high contrast ratio and wide viewing angle

### Mobile Trolley

- Medical Mobile trolley with small size and light weight, easy to install and move.

